

dwellings and the adjoining lot to the east, from 1903 to 1906.

The building now occupied by the Farmers Cooperative Exchange Feed store was originally built by the Northern Lumber and Supply Co. in 1919 or 20 and was used exclusively for a hardware store. They operated this hardware store in connection with a retail lumber yard until 1925 when the business was taken over by the Pier interests who continued with the hardware business until 1928 and they sold the building to A. Wagner. First Hugo Schwager and then Oakley Ackerman served as managers of this business. In March, 1932 the Lincoln Mill opened a feed store here and continued this business until they sold to the Consumers in August, 1944.

A postoffice was established in Gleason in 1902. A Miss Anna Babcock was the first postmaster but she served only a short time when A. W. Manthey became postmaster and in December, 1914 Emil H. Lang took over the office and moved it to its present location which was then the Gleason Mercantile store building; following his resignation in 1927 Edmund Noel received the appointment and was postmaster until 1931. Robert Smith served as acting postmaster from then until April 26, 1933 when Mrs. Ethel Welch received the appointment and she is the present postmaster. There are three rural routes out of Gleason. The carriers are Otto Dupke, since 1915; Ralph Hopper, since 1923, and Wm. Gross, since 1925. These three routes serve a total of 143 miles of rural territory surrounding the village.

The Gleason Telephone Company came into existence in 1941. Wm. F. Levia and Emil H. Lang served as the first president and treasurer, respectively. Mrs. Emma Behrens served as operator for the first twelve years, and until the office was moved to its present location.

In the winter of 1911 Wm. A. and Robert H. Smith erected a sawmill in Gleason. This business continued under the same management until the building was dismantled and sawing operations were discontinued about 1920. Likewise, the present Smith Brothers lumber yard was established by these same brothers shortly after their mill was put in operation, and although both the original proprietors have passed away, the business is still being operated by the sons of these pioneer businessmen, and it has been enlarged and new lines added until today it is one of the largest businesses in Gleason.

Three doctors have served this community, with residences and offices located in Gleason—Drs. W. H. Beyer, Meany and Niska.

The Riverside Presbyterian Church was organized in 1897, and has always stood at the same corner. In 1906 the St. Paul's Evangelical Lutheran Church became established here, and in 1912 the present building was erected. In 1931 the Presbyterian Church was remodeled and enlarged and about 1933 the Lutheran Church underwent extensive remodeling and was likewise enlarged.

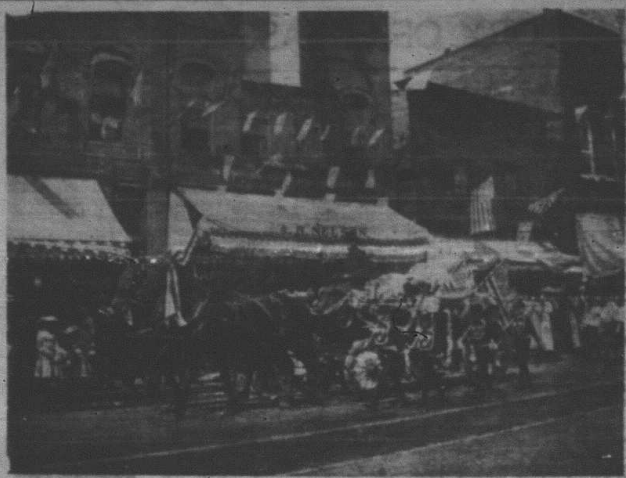
The Wisconsin Public Service Corporation introduced electricity here in 1927. Street lights became a reality in 1946.

The Gleason Mercantile Company was incorporated in 1912 by Harry Krom, John Horgen, Wm. A. Smith and Robert H. Smith, and in 1913 the Kroin and Horgen interests were bought by the Smiths and Emil H. Lang. Mr. Lang managed this general store business from that time until he disposed of his interest to the Smith Brothers in 1926.

Fred Bucholz, Andrew Ronguish, Glen Batchelder, Victor Wachsmuth and Gottlieb Tesky have been the village cobblers. Bucholz operated his shop in what is now the Robert Cummings garage. Ronguish had his shop in what is now the Howard Feist dwelling, and finally this thriving business was established in the building now occupied by the Gleason Electric Shop where it remained until the building was sold, and the present cobbler, Gottlieb Tesky built his present building.

Ronis Brothers Garage began business here in April, 1922, having bought the former Alfred Schmidt's garage building just west of the present Schielke barber shop. This partnership continued until Jake Ronis passed away in 1939. The original building was destroyed by fire on December 11, 1938, and immediately thereafter the Vickery garage building was purchased. This building was remodeled and modernized in 1941. George Ronis has been the sole proprietor the past five years.

The Gleason State Bank was incorporated in May, 1929, and commenced business on September 6th of the same year. The original capital of \$15,000.00 was increased to \$25,000.00 in October, 1943. Jacob G. Callen has served on the board since the bank was organized and has been president since 1925. John King was the first cashier and served until November 1, 1923. C. C. Millenbain has been cashier since that time. The following men have served on the Board of Directors during this time: Dr. W. H. Beyer; Jacob G. Callen, Alfred Hurlbutt, Robert H. Smith, John King, Wm. D. Rice, A. W. Manthey,



Here is a section of the parade held here during the state encampment of the Modern Woodmen of America, taken about 1910. The scene is in front of the A. B. Nelson store, now occupied by the Gruett Drug Co.

# CENTENNIAL "Jubilee"

OUR SINCEREST

## CONGRATULATIONS

TO

## MERRILL



### MERRILL MARBLE & GRANITE WORKS

# Adel Bräu

DRAUGHT BEER

# SCHOEN'S

SOLD LagerS  
BOTTLE BEER

"Quality Has No Substitute"

WAUSAU BREWING CO.  
WAUSAU, WISCONSIN  
WEST SIDE • PHONE 4048 4049