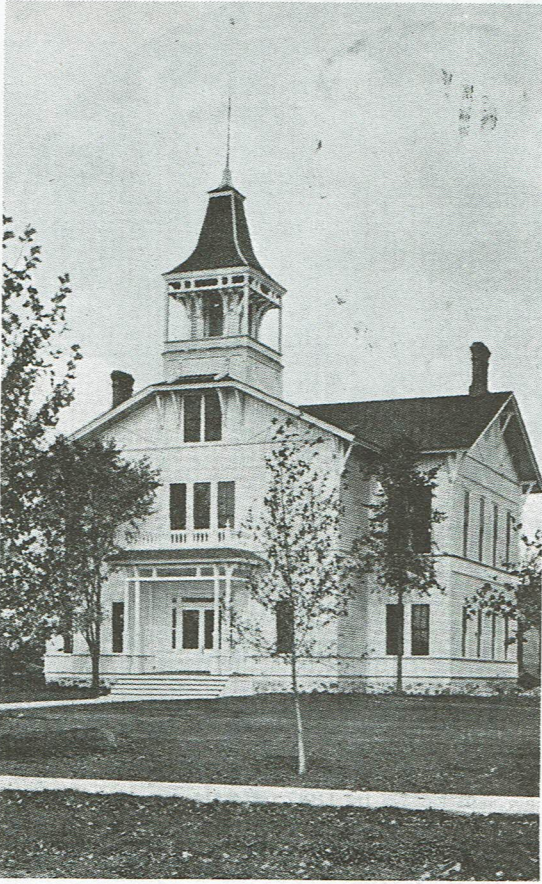


We Reflect



In 1880, the county board resolved to build Merrill's courthouse. This structure, built in 1885, later became the Lincoln County Training School.



The present courthouse site was purchased in 1900 and the colonial style building was completed in 1903.

Merrill's courthouse tower rising above the trees is one of Merrill's most famous landmarks. This year as we commemorate Jenny Bull Falls 125th anniversary in a Quasiqucentennial celebration, we look to the past. In this issue are highlights of our city and county government, our retail and industrial community, and our community endeavors. This is in part highlights of the last 125 years which indicate Merrill's growth from the village of Jenny Bull Falls to a modern city of the '70's.

We dedicate this issue to the citizens who had faith to build this community from three logging industry sites along the Wisconsin to a city now unified to work for continued growth.



Published by Merrill Shopper & Foto News, July 26, 1972