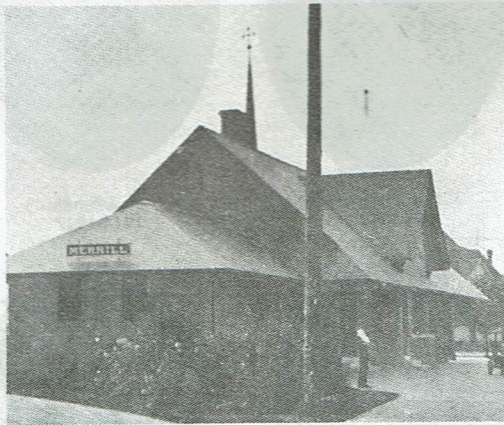


1800's Small hamlet begins to grow



Trolley car on E Main St.



Railroad one of the factors in Merrill's growth



Loggers initiate Merrill's growth

Jenny Bull Falls became a community in 1847. A lumbering village, Jenny grew from 17 log cabins to 7,000 people. By 1890, there were 12,000 inhabitants. The development of electricity, the telephone and telegraph and the railroad opened up wide avenues of industrial and economic growth.

The first city elections were held on March 6, 1883. The following officials were elected: Thomas B. Scott - Mayor, M. W. Sweeney - treasurer, A. A. Helms - city attorney, J. H. Mc Murray - assessor and D. W. McLeod - city clerk.

This era also featured the first parochial school in Merrill, St. Stephen's in 1884. The first Lincoln County Fair was held in 1885. A movement began to set up T. B. Scott Library and in 1887 Merrill had its first organized Fire Department.

Street cars and the two-trolley system in Merrill was one of the few successfully operated systems in the nation.

August 27, 1880 - Serious forest fires are raging . . . Charles Osborne completes new Post Office Building . . . September 10, 1880 - Third Ward School on Streeter Square is again in operation . . . September 17, 1880 - Potato crop unusually large . . . Weiss receives shipment of sewing machines . . . October 8, 1880 - Land hunters arriving daily in the village to look up sites for new homes in community . . . October 15, 1880 - New bridge across Prairie River nears completion . . . October 29, 1880 - Chicago, Milwaukee and St. Paul Railroad takes formal possession of Wisconsin Valley RR, making arrangements for depot and engine house on Jenny

We're celebrating and invite you to Merrill's 125th Anniversary
**ONE HOUR MARTINIZING • FRAN'S BARBERSHOP • B & D MOTORS
 CAMPBELL'S • MILLER'S HOME FURNISHINGS • MERRILL MILLWORK**