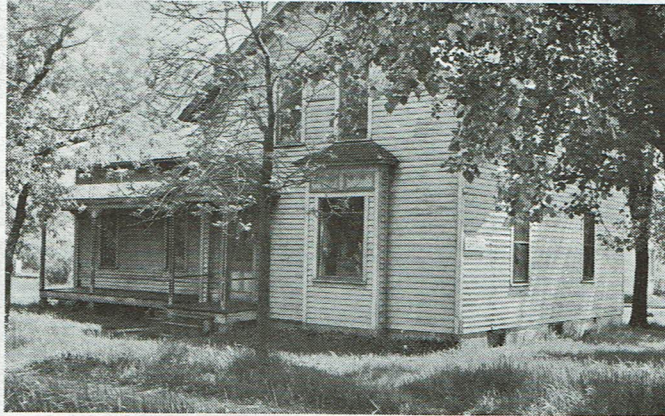


31 Years of Good, Hard Work

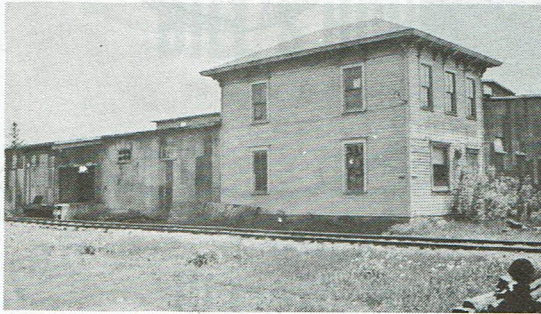
AND A HIGH QUALITY OF PRODUCTS



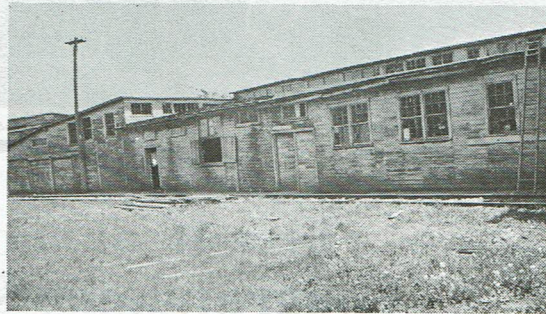
Emil Semling, 1941



S & M First Office Building, 1941



The Warehouse, 1941



S & M Plant, 1941

Mr. Emil Semling, still hard at it, saw quite a growth.

- o From a Sash & Door plant to a proprietary line of window units and general millwork products.
- o 328,000 sq. feet of plant space today; S & M plus subsidiaries.
- o Starting with 11 employees, S & M and subsidiaries employ nearly 500 people today.



SEMLING & MENKE
COMPANY, INC. ● S. NAST ST.

HOUSE OF MERRILL

SUBSIDIARY OF S & M — SINCE 1970
NORTH OHIO ST.

H. M. DRAPER & SONS

SUBSIDIARY OF S & M — SINCE 1967
SALT LAKE CITY UTAH